



# SAFER CORNWALL

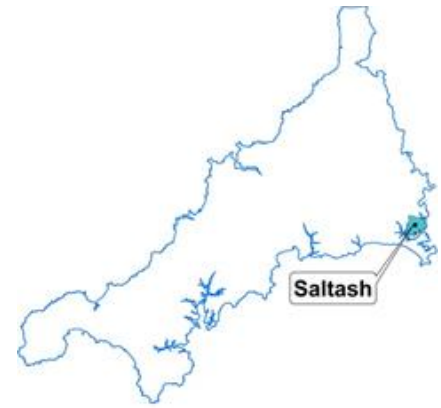
Kernow Salwa

# Safer Saltash Town Profile 2021



# Introduction

This profile provides a **picture of crime and community safety issues** for this area. It compares Saltash with the average for other large towns in Cornwall (towns with a population of 10,000 or more), described within this profile as “urban”. The time period for this profile covers the COVID-19 Pandemic meaning that we are comparing a year in pandemic conditions against a year when we were largely pandemic free. The profile also incorporates socio-economic, health<sup>1</sup> and community safety profiles that are available for this area.



## key statistics

	<b>Current population of Saltash town area is 16,674</b>	<b>27% are aged under 25</b> 27% Cornwall / 30% England
<b>People</b>		<b>25% are aged over 65</b> 24% Cornwall / 18% England
	<b>1 in 5 live in the 20% most deprived neighbourhoods in England</b>	
<b>Vulnerable groups</b>	<b>14% of children</b> are living in poverty (16% in Cornwall and 19% across England)	<b>Education &amp; skills</b>
	<b>4% of households lack central heating</b>	
<b>Housing</b>	7% in Cornwall 3% across England	<b>Economy</b>
	<b>19% of people have a limiting long-term illness</b>	
<b>Health &amp; wellbeing</b>	21% in Cornwall 18% across England	<b>Access &amp; transport</b>
		<b>16% of households do not have a car</b>
		17% in Cornwall 26% across England

Except where stated this profile provides information for **the geographical area representing Saltash Town as defined by [Local Insight \(communityinsight.org\)](https://communityinsight.org)**; comparisons are drawn with the average for other large towns in Cornwall (with a population of 10k or more, also described as “urban”) and Cornwall as a whole.

<sup>1</sup> Network area [Community Profiles](#) and [Health Profiles](#) are available from the Joint Strategic Needs Assessment (Public Health) website pages

## What is happening with crime in Cornwall?

**Cornwall's crime rate remains low** and we have the third lowest crime rate in our most similar national family group, which is 21% lower than the average seen across the group. The **volume of crime continues to reduce**, falling by 6% or 1,666 offences compared with 2019/20.

Over the course of the pandemic, lockdowns and restrictions on daily life have **reduced the general level of crime and risk to the public** – as we move out of lockdown restrictions, crime levels will re-establish. Risk of harms inside the home, such as domestic abuse, have remained high and the complexity of needs for those seeking help has escalated, which has placed additional demands on services.

**Anti-social behaviour remains at a higher level than in previous years.** We are continuing to work successfully in partnership, through our Safer Towns Programme, to address the most persistent issues and support the communities affected and have increased local capacity to respond through jointly funded dedicated ASB caseworker posts (Truro and Penzance). We are continuing to work jointly with Housing to improve and increase availability of accommodation solutions.

## What are the key trends for the Saltash town area?

Along with other large towns in Cornwall, the Saltash town focus area can have higher levels of crime due to the concentration of people living there. It has a population of just under 16,700. The **all-crime rate in Saltash is lower than the average** for other large towns in Cornwall.

- The crime rate in Saltash town has **reduced by 5%** (39 offences) over the last 12 months. This reduction is in line with that seen in Cornwall and across the other large towns (6% and 7% respectively).

There have been increases in some crime types in the Saltash town area, but rates for **most crime and incident types are lower** than the rates seen across other large towns in Cornwall:

- We have seen **increases in anti-social behaviour** incidents over the last 12 months. This is mainly attributed to an **increase in rowdy nuisance neighbours**, which has increased across Cornwall and is linked to more people being in their homes during lockdown periods;
- Drug offences and possession of weapons have increased in the town. It should be noted however that these are low volume crimes, meaning that percentage increases are volatile. The **increase in drug offences is linked to possession** rather than trafficking offences, which has remained stable;

## Safer Saltash Priorities

- Drug related harm and recovery;
- Domestic Abuse;
- Suicide attempts off the Tamar Bridge;
- Anti-social behaviour and public disorder on the Waterfront and Tamar Bridge
- Crime prevention and improved feelings of safety
- Communications, community engagement and building community resilience

- Public order has also increased slightly but rates are significantly lower than the average seen across the other urban areas;
- There has been an increase in Burglary offences in the town which opposes the reduction seen elsewhere across Cornwall. Further analysis of the data shows that there is a cluster of offences during February 2021, which **may be linked to a prolific offender**;
- Criminal damage offences have increased when compared with the previous year. This trend opposes the reductions seen across the other large towns. When looking at the data we can see that there has been a spate of vehicle damage offences during March 2021.

## Crime Overview

The table below provides a quick glance at all crime and disorder types in the Saltash town focus area, describing whether the trend is increasing (▲), decreasing (▼) or stable (▶) and how this area compares with the urban area average for Cornwall (high ●, above average ●, average or lower ●).

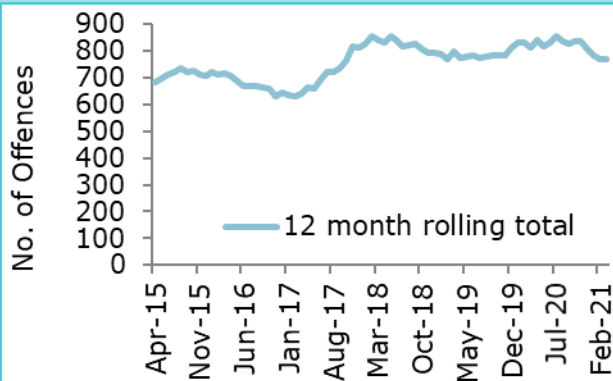
Crime / Incident type	Trend	Rate per 1000	Year ending Mar 21	Year ending Mar 20	Annual Change	Urban areas	Urban areas trend
All crime	▶	45.9	771	810	-5%	●	▼
Domestic Abuse (total incidents)	▶	17.2	288	289	0%	●	▶
Domestic Abuse Crimes	▼	10.1	169	193	-12%	●	▶
Rape	▶	0.9	15	12	25%	●	▶
Other Sexual Offences	▼	0.9	15	22	-32%	●	▼
Alcohol Related Crime	▼	6.4	107	122	-12%	●	▼
Public Order Offences	▲	3.5	58	53	9%	●	▼
Anti-social behaviour incidents	▲	22.3	375	319	18%	●	▲
Street Drinking/Begging/Drug Litter	▲	1.5	25	18	39%	●	▶
Hate Crime	▼	0.5	9	21	-57%	●	▲
Homicide	▶	0.0	0	0	0%	●	▶
Violence with Injury	▼	6.3	105	120	-13%	●	▼
Violence without Injury	▼	11.3	189	260	-27%	●	▲
Under 18 Victims of Crime	▼	25.5	86	99	-13%	●	▶
Drug Offences	▲	2.6	43	15	187%	●	▲
Possession of Weapons	▲	0.5	9	4	125%	●	▲
Dwelling burglary [1]	▲	2.9	21	12	75%	●	▼
Non-dwelling burglary	▼	1.4	23	31	-26%	●	▼
Robbery	▶	0.4	6	4	50%	●	▶
Vehicle Offences	▼	1.7	29	34	-15%	●	▼
Shoplifting	▼	2.4	40	58	-31%	●	▼
Other Theft	▼	3.8	63	74	-15%	●	▼
Criminal Damage	▲	8.0	135	97	39%	●	▼
Arson	▶	0.1	2	4	-50%	●	▼
Other Offences	▲	1.1	18	10	80%	●	▲

[1] based on rate per 1000 households

**Note that caution should be taken when interpreting percentage change relating to small numbers (where there are less than 20 crimes per annum), due to the volatility of small numbers.**

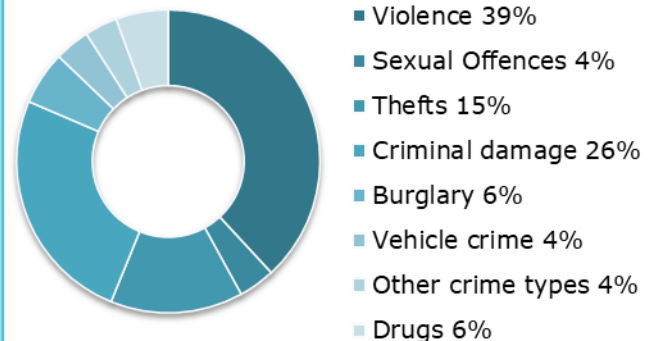
## Trends and seasonality

### Trend



After a period of increase the crime rate in Saltash is fairly stable. We have seen a reduction during the beginning of 2021 meaning we have seen a 5% reduction across the town

### Offences

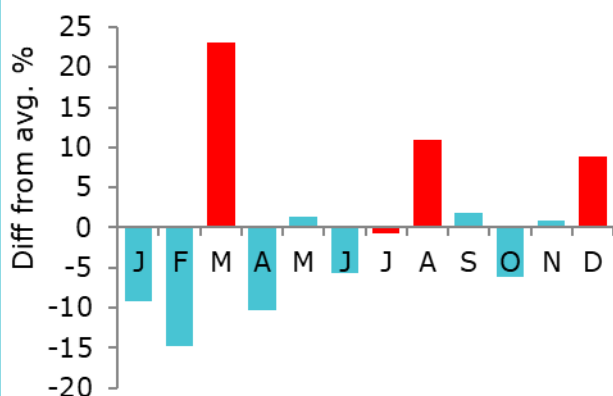


The proportion of violence is in line with the average seen across the other urban areas at 37%

There is a slightly higher proportion of criminal damage offences in the town.

### Seasonality

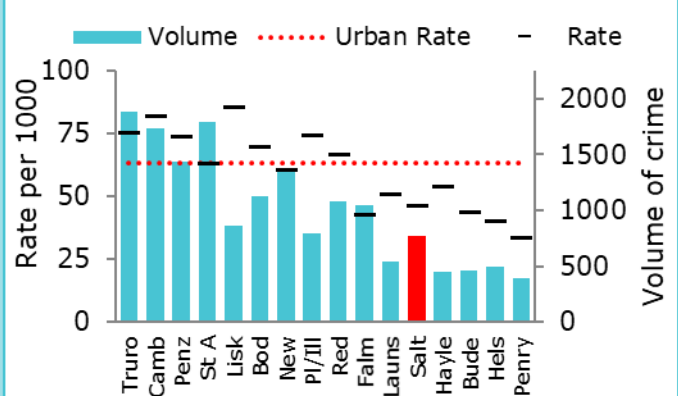
(based on a 3 year average)



No obvious seasonality seen in Saltash, although there are above average number of crimes in March, August and December.

### Comparison

(based on combined rate and volume)



Saltash has a low crime rate and a lower volume of crime. Saltash is ranked 12th for combined rate and volume of crime.

Rate of crime shows impact on residents whereas volume of crime indicates demand.



## Violence with Injury

### Cornwall context

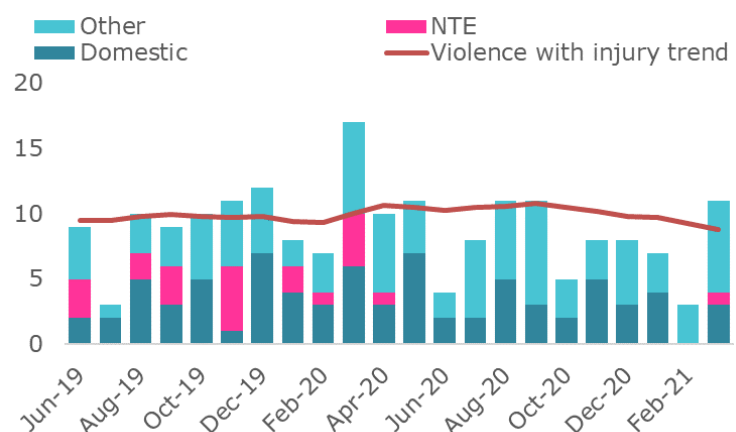
Just under **half of all recorded crime relates to violence** against the person. Although Night Time Economy (NTE) violence has **fallen dramatically due to extended COVID restrictions**, other types of violence have increased including **domestic abuse**, and less serious violence such as malicious communications offences (which includes on-line harassment), harassment and low-level assaults. The level of **NTE violence will increase again once restrictions are lifted**, as we saw last summer.

When we look at violence with injury in Saltash we can see that the rate of reduction is greater than that seen across Cornwall and the trend across the other urban areas (-13%).

- The largest reductions can be seen in alcohol related crime and NTE related offences. It must be remembered however that COVID-19 restrictions would affect these crimes as NTE premises would have been closed for lengthy periods during the year.

Violence with Injury in Saltash	Trend	Rate per 1000	Year ending Mar 21	Year ending Mar 20	Annual Change	Urban area comparison	Urban areas trend
Total Violence with Injury	▼	6.3	105	120	-13%	●	▼
Alcohol related	▼	1.4	24	39	-38%	●	▼
Victim aged under 18	►	1.6	27	24	13%	●	▼
Domestic Abuse	►	2.3	39	43	-9%	●	▲
Night time economy	▼	0.1	2	22	-91%	●	▼
Other	▲	3.4	56	45	24%	●	▼
Not known	►	0.5	8	10	-20%	●	▼

- The chart to the right illustrates the trend of violence with injury. We can see how COVID-19 restrictions have affected the number of crimes between April and May 2020 during the first national lockdown. Domestic abuse and other violence have been affected less by restrictions, although there is still clearly a dip during the lockdown periods;
- It is unlikely that this reducing trend will continue, especially as we begin to lift restrictions and more people will begin to socialise and frequent night time economy premises.



## Domestic Abuse and Sexual Violence

### Cornwall context

**Domestic abuse makes up a higher proportion of crime** in Devon and Cornwall than similar areas elsewhere. 40% of violence with injury is domestic and this type of violence increased by 1% overall across Cornwall.

Sexual violence reported to the police has seen a steep rising trend over successive years, driven largely by increased reporting and improved recording. The trend has notably plateaued since 2019 and reported crimes reduced by 4% in the last year.

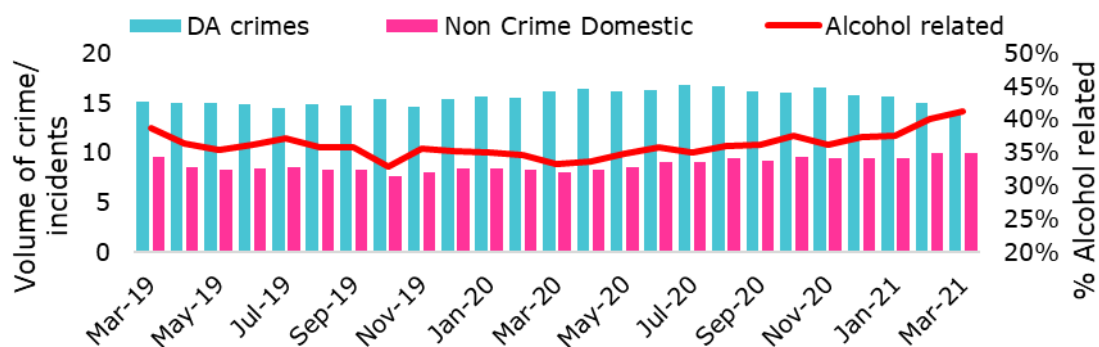
The rate **of domestic abuse crime is slightly lower** in Saltash than the urban area average.

- The total number of incidents has remained stable when compared with the previous year. Although this reflects a drop in incidents that have been turned into crimes- this opposes the increasing trends seen across the average for other urban areas
- The number of sexual offences has remained consistent when compared with the previous year. Rates of these incidents are lower than the average rate seen across the other urban areas.

Crime / Incident type	Trend	Rate per 1000	Year ending Mar 21	Year ending Mar 20	Annual Change	Urban areas	Trend
Domestic Abuse (total incidents)	▶	17.2	288	289	0%	●	▶
Domestic Abuse Crimes	▼	10.1	169	193	-12%	●	▶
Rape	▶	0.9	15	12	25%	●	▶
Other Sexual Offences	▼	0.9	15	22	-32%	●	▼

The chart below shows us how the trend of domestic abuse crimes and incidents varied over the course of the pandemic. We can see that the numbers **of crimes and incidents have remained fairly stable** throughout the lockdown periods in Saltash.

- What we do see however is how the proportion that is alcohol-related has changed substantially through the year with up to **43% of crimes being recorded as alcohol-related** as we end the financial year.



## Anti-Social Behaviour

### Cornwall context

Over the last couple of years, although the volume of incidents has continued to fall, our towns have seen escalating issues with **complex anti-social behaviour, street drinking, drug use and rough sleeping**. The rise in **crack cocaine use** was an important driver initially but the **challenges of the pandemic have exacerbated pre-existing issues** over the last year, disproportionately affecting some of the most vulnerable people in our communities.

- **Since April 2020, across Cornwall we have seen a sharp rise** in anti-social behaviour reported to the police, alongside **increases in neighborhood tensions and reduced tolerance**, believed to be further contributing factors.
- A significant proportion of police recorded ASB has been linked to COVID restrictions this year – but this only partially explains the rise. Overall **COVID-related incidents account for 10%** of reports, but this has been as high as 26% in January 2021. In the lockdown periods, we have seen on average an extra 12% of incidents per month that would not have previously been reported as anti-social behaviour.

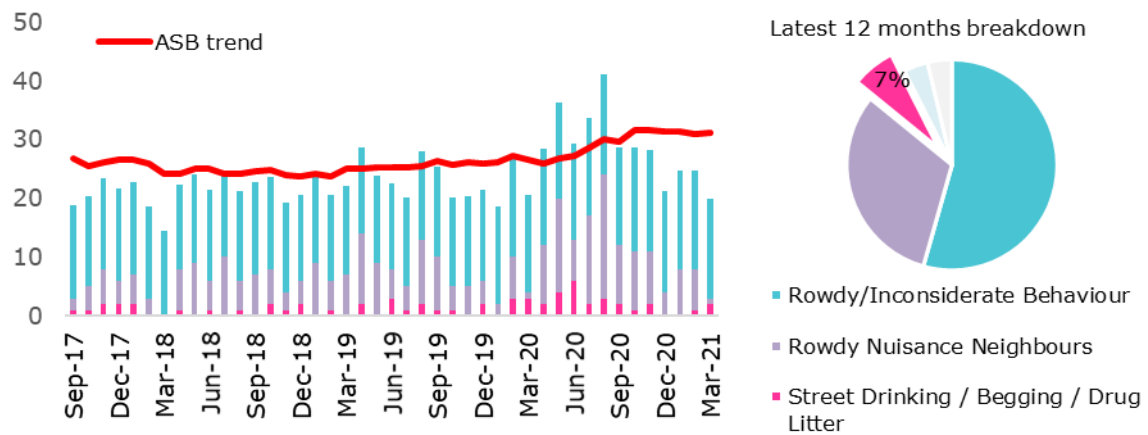
In 2020/21, the number of anti-social behaviour (ASB) incidents reported to the police was **18% higher** than the previous year. The number of incidents reported **rose rapidly during the first national lockdown**:

- **Rates of ASB** incidents in Saltash are lower than the average rate for the other urban areas;
- **We have seen an increase in rowdy nuisance neighbours.** Contributory factors include people spending more time at home, which has increased awareness of and exposure to behaviours perceived as anti-social, alongside an actual rise in incidents, and reduced tolerance;

Crime / Incident type	Trend	Rate per 1000	Year ending Mar 21	Year ending Mar 20	Annual Change	Urban areas	Trend
Total ASB incidents	▲	22.5	375	319	18%	●	▲
Rowdy/Inconsiderate Behaviour	▶	12.2	204	199	3%	●	▲
Rowdy Nuisance Neighbours	▲	7.1	118	73	62%	●	▲
Street Drinking / Begging / Drug Litter	▲	1.5	25	18	39%	●	▶
Vehicle	▶	0.8	14	18	-22%	●	▼
Other	▶	0.8	14	11	27%	●	▲



- Street **Drinking/Begging/Drug Litter** incidents make up 7% of all reported incidents in the town and this is consistent with the average of other urban areas (9%). These incidents have **slightly reduced** over the last 12 months (a reduction of 6 incidents).



## Problem use of drugs and alcohol

### Cornwall context

**Across Cornwall Drug trafficking** offences, particularly relating to 'other class A' drugs, have almost doubled when compared with last year and **weapons possession** offences are also up on last year by 17%, noting that trends in these types of offence tend to **reflect proactive targeting and policing priorities**. These are low volume crime types and make up only 1% of all recorded crime in each case.

In Saltash we have seen substantial percentage increases in both drug possession and Dwelling burglary offences (noting that the volume of crime is comparatively small), although only the latter have rates that are higher than the average seen across the other urban areas.

Crime / Incident type	Trend	Rate per 1000	Year ending Mar 21	Year ending Mar 20	Annual Change	Urban areas	Trend
Possession of Drugs	▲	2.3	38	11	245%	●	▶
Dwelling burglary [1]	▲	2.9	21	12	75%	●	▼
Shoplifting	▼	2.4	40	58	-31%	●	▼

## Young People and crime

### Cornwall context

Across Cornwall we have seen 278 young offenders during the year who were responsible for 501 offences, both of which have reduced by 19% and 20% respectively. **Young people in Cornwall tend to be charged with less serious violence**, usually offences of common assault or assault with injury (ABH) making up 79% of all violence offences in the past year. 8% (14 offences) related to serious violence and a further 10% (18 offences) for possession of a weapon. Young people are also more likely to be charged with criminal damage and low-level theft offences.

Crime / Incident type	Trend	Rate per 1000	Year ending Mar 21	Year ending Mar 20	Annual Change	Urban areas	Trend
Young Offenders	▶	2.7	9	5	80%	●	▲
Total Offences	▲	4.1	14	8	75%	●	▼
Under 18 Victims of Crime	▼	25.5	86	99	-13%	●	▶

- In Saltash there have been 9 young offenders that have been charged with 14 offences who are resident within the town. There are lower rates of young offenders in the town and it should be noted that young people tend to be **charged with less offences** when compared with other urban areas;
- There has been a 13% reduction in the number of offences where young people aged under 18 are victims of crime. The **rate of incidents is significantly lower** than that across the other urban areas.

## Vulnerability Index

The Vulnerability Index is a **new small area risk model**, currently in the development phase, that looks at the cumulative impact of a range of community safety issues at town and small area (Lower Super Output Area<sup>2</sup>) level. The model uses rates of incidence per 1000 resident population compared with the Cornwall average.

LSOA Name	Population	Average	Violence with injury by month	Domestic Abuse by month	Residents in Drug treatment	Residents in Alcohol treatment	Shoplifting (rate)	Deprivation (Imd 2019)
Saltash West Callington Road and Castlemead	1,262							
Carkeel, Notter and Latchbrook North	1,699							
Saltash Moorlands Lane and Oaklands Drive	1,441							
Saltash Beatrice Avenue, Broad Walk and Lynher Drive	1,392							
Saltash Warfelton	1,265							
Saltash Hospital and Wearde	1,217							
Saltash South Pill	2,878							
Saltash Town Centre and Saltmill	1,617							
Saltash Fairway and Bakers Hill	1,510							
Saltash Burraton	1,220							
Latchbrook South	1,173							

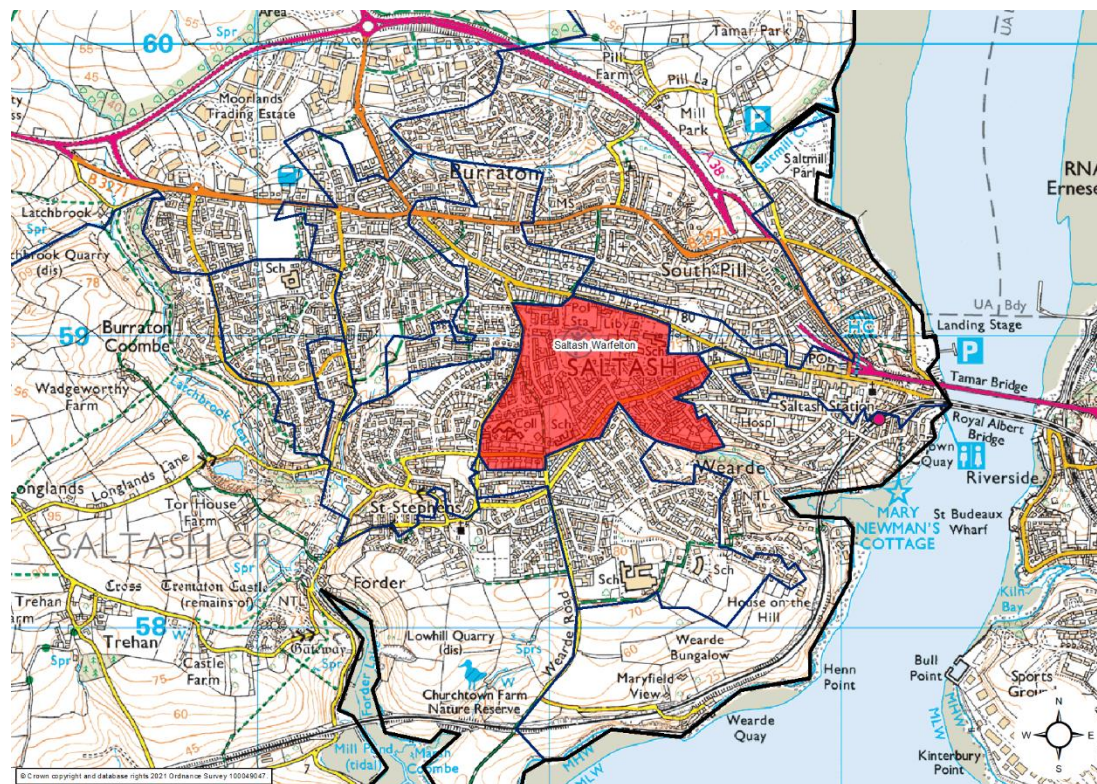
Please note that the numbers in this table are comparative against a score of 100 (Cornwall average) where scores that are in the top 20% are highlighted red and those that are in the top 40% highlighted amber.

<sup>2</sup> Lower Layer Super Output Areas (LSOA) are a geographic hierarchy designed to improve the reporting of small area statistics in England and Wales. The average population for these areas is approximately 1500 people.

## Key Observations

Overall as a town the **Saltash Area scores lower than average on the Vulnerability Index**. The town has no areas that rank in the 20% most deprived LSOAs in the country<sup>3</sup>. Some areas however, have a higher ranking in the domains of Employment and Living Environment

- The area with the greatest collective vulnerability across the selected indicators is:
- Saltash Warfleton- this area has high rates for residents engaged with alcohol treatment services and above average rates of domestic abuse incidents;



<sup>3</sup> Cornwall and Isles of Scilly Community Profiles <https://cornwall.communityinsight.org/>

## What we are doing

In light of the changes brought about by Covid 19 restrictions, Safer Saltash have adapted and met virtually every 2-3 weeks since March 2020 to ensure that regular dynamic intelligence and updates about the rapidly changing nature of crime and risk across the town was communicated and acted upon. The new model has been praised by members of the partnership who are still fully engaged and appreciate the speed of actions and the frequency of the communications.

**Local issues have been predominantly related to the impact of COVID restrictions** and more recently anti-social behaviour in specific areas of Saltash. Partners have worked closely together to address these issues.

During the first lockdown the focus was very much on **supporting vulnerable families during lock down** and supporting access to services and provisions; partnership activity took place with Young People Cornwall and Livewire providing additional supplies in the care packages provided and delivered to families by Saltash Community School. Safer Saltash supported Volunteer Cornwall with their work with individuals in the town and promoted the services provided by PL12 throughout the lockdown period.

Safer Saltash have worked with key partners to promote new Neighbourhood Watch schemes to increase community resilience and crime prevention. **A multi-agency approach was put in place to address issues with large groups of young people** beginning to congregate in key areas and specific ASB problems have been addressed.

During the Summer months there was an increase in ASB on the Waterfront; Safer Saltash worked closely with the Plymouth ASB team to identify specific young people and promote safety messaging about tombstoning on the waterfront in line with the wider 'Don't Jump into the Unknown' campaign. Collectively, Safer Saltash partners increased efforts to promote the work done to tackle community safety issues in order to alleviate some concerns raised on social media platforms. Across the Town partners **increased their visibility and numerous joint patrols** were undertaken to provide public reassurance.

In the third quarter of the year, concerns were raised regarding close proximity of Saltash to Plymouth/Devon and different tier 1/2 restrictions, specifically around people from tier 2 areas travelling to Saltash to drink in licenced premises without purchasing a substantive meal. Joint comms with Plymouth City Council and Cornwall Council were promoted by the partnership and close monitoring of the situation was managed at the multi-agency meetings. **Low level ASB involving young people reduced during this period**, following the partnership actions taken. Young People Cornwall provided additional outreach in Saltash for a 3-week period.

In the final quarter of 2020/21, Safer Saltash considered the community safety risks likely to emerge as we slowly moved out of lockdown, and preventative measures to mitigate. **A joint Summer plan was agreed prior to the Easter break, which focused on issues likely to occur on the Waterfront.**

**SAFER  
CORNWALL**

Kernow Salwa